

INSTRUCTION GUIDE



GPHANTOM BREAST

LEARN. PRACTICE. IMPROVE.

INSTRUCTION GUIDE

Thank you for choosing **Gphantom!**

We are a company specialized in the development of solutions for medical training. If you want a specific model for your training, contact us. Here we will help you to handle and optimize the durability of your product.

Your **Gphantom Breast** is eligible for our Fidelity Program.

Consult conditions.



LEARN. PRACTICE. IMPROVE.

ABOUT YOUR PRODUCT

The Gphantom Breast is a model intended for training in ultrasound-guided biopsy and diagnostic imaging. This model has eleven internal structures with six different echogenicity properties. This configuration enables the training of fine needle biopsy (FNAB) and other procedures such as CORE biopsy.

Our needle-mark recovery technology enables your Gphantom to recover up to 99% of the needle marks within 48 hours after training, when using needles with thicknesses of 21 G or less. For the best use of this needle-mark recovery technology, we recommend that you leave your product in a cool, sunny place for 48 hours after each use;

We recommend movements of up to 30 degrees in relation to the product surface, using needles such as the ones mentioned in the previous item. Avoid very long movements (large angles) after needle insertion, as these may shorten the life of your model. In addition, we do not recommend injecting or removing materials from your Gphantom during use.

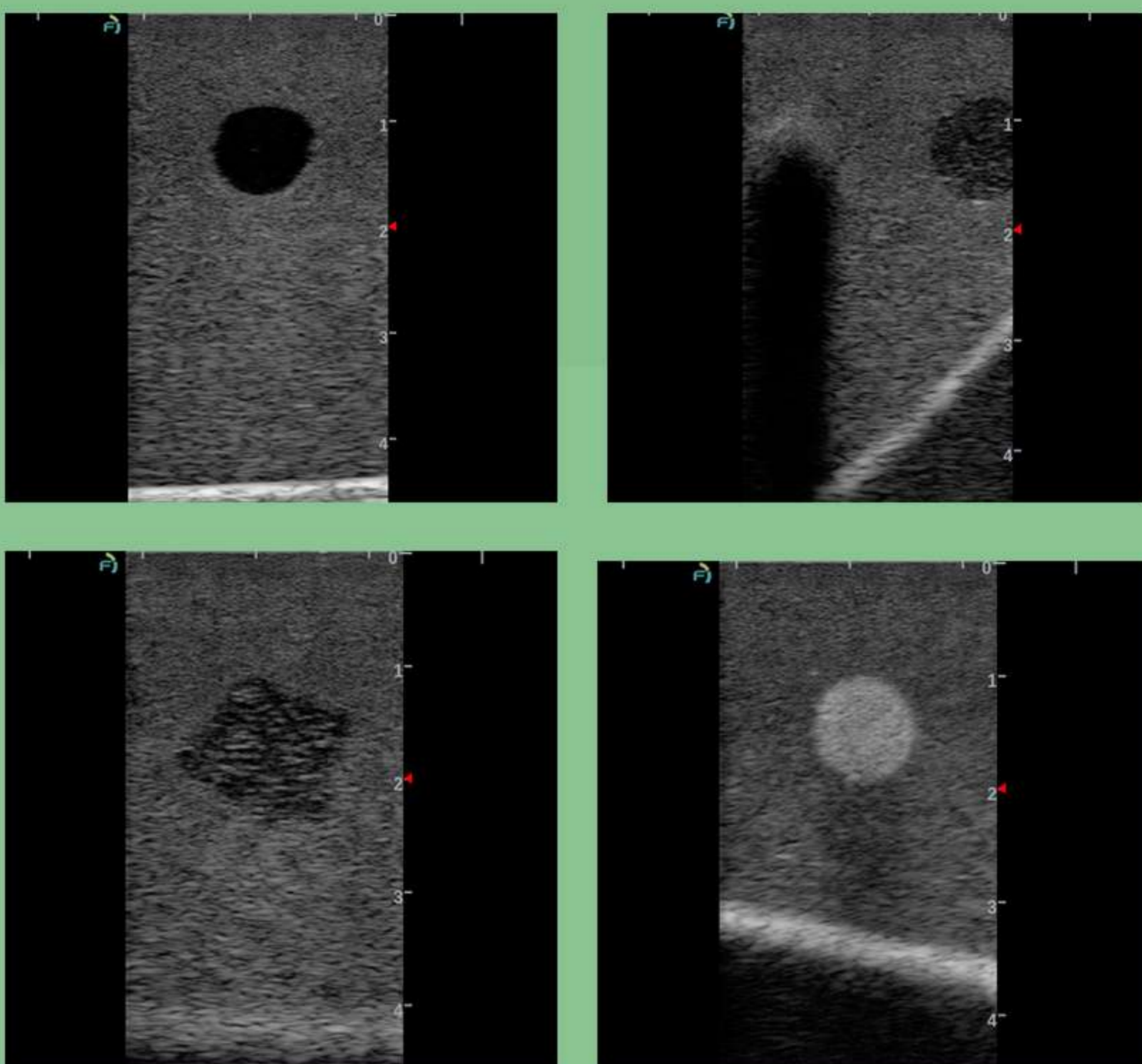
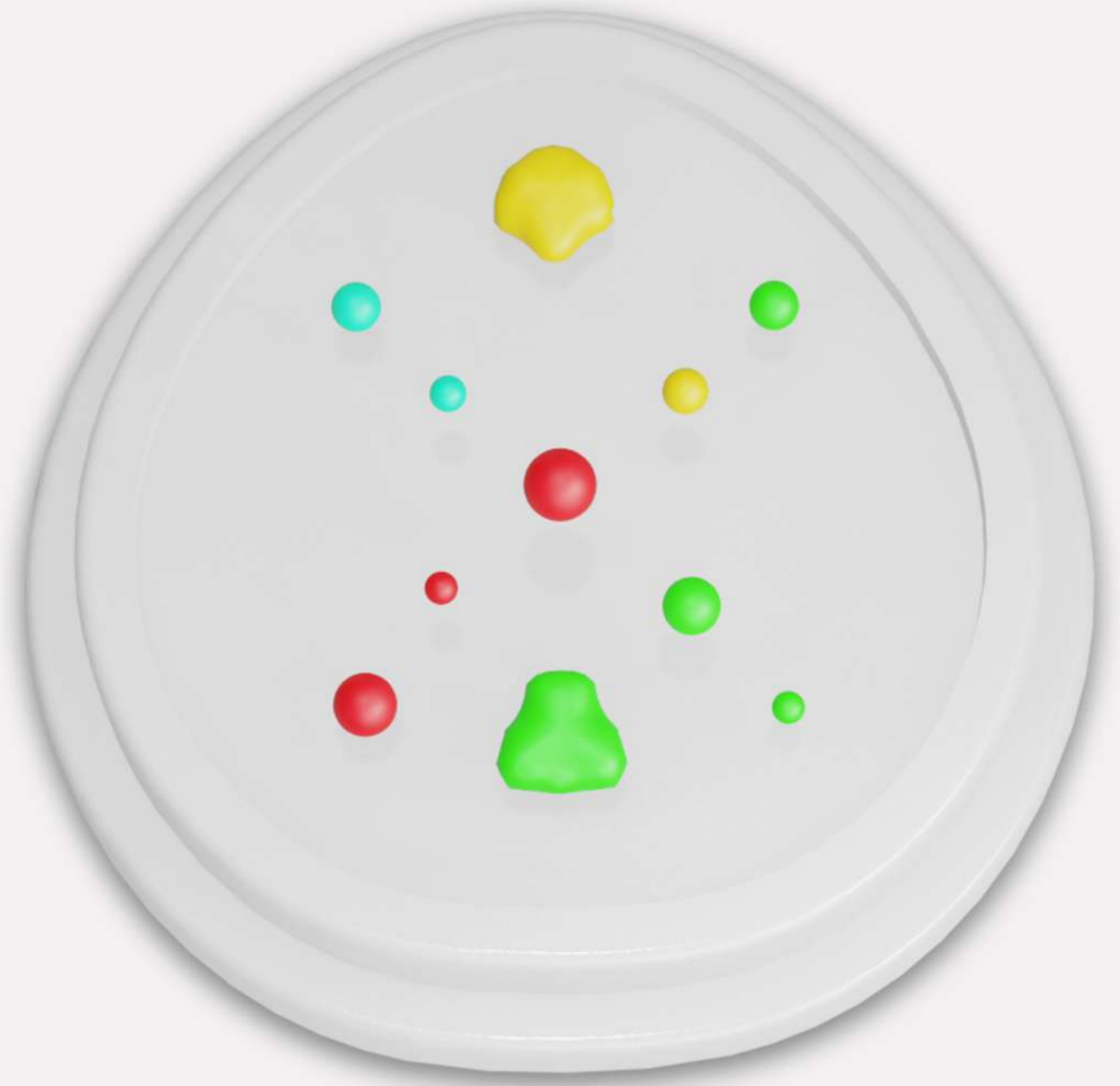
If you have such a need, please contact us.



ABOUT YOUR PRODUCT

INTERNAL STRUCTURES

-  **Hyperechoic**
-  **Hypoechoic**
-  **Shadow**
-  **Anechoic**

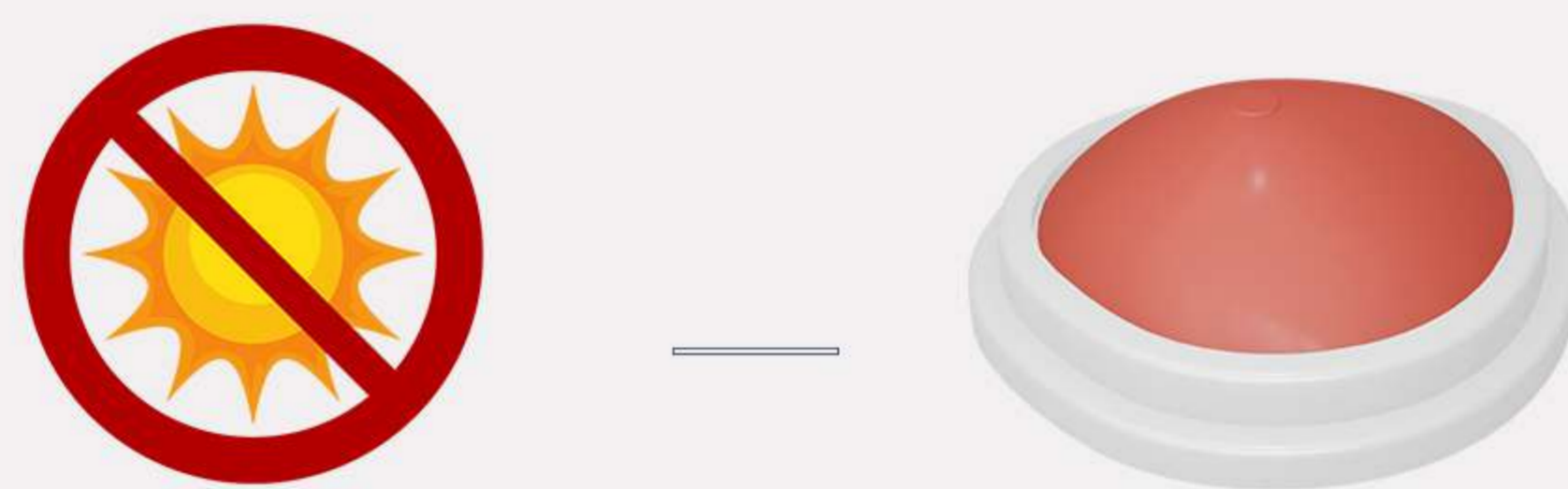


B mode ultrasound images of Gphantom Breast.

PRODUCT CODE	PBD050501
APPROXIMATE WEIGHT	400g
LENGTH	14cm
HEIGHT	6,5cm
WIDTH	13cm

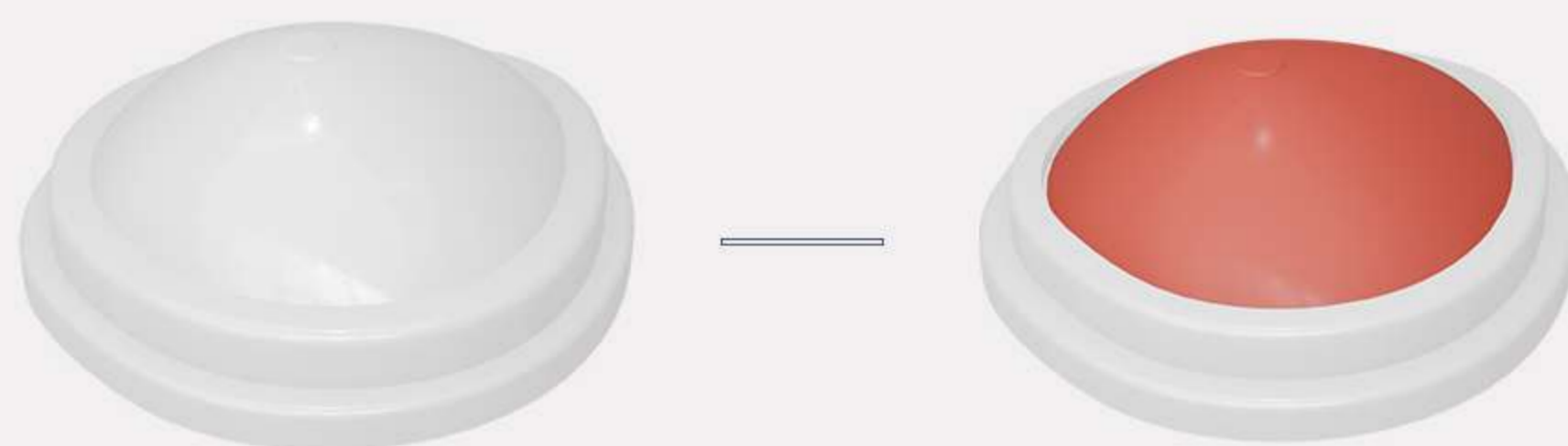
HANDLING AND MAINTENANCE

- ① Always keep your product in a fresh place, sheltered from the sun.

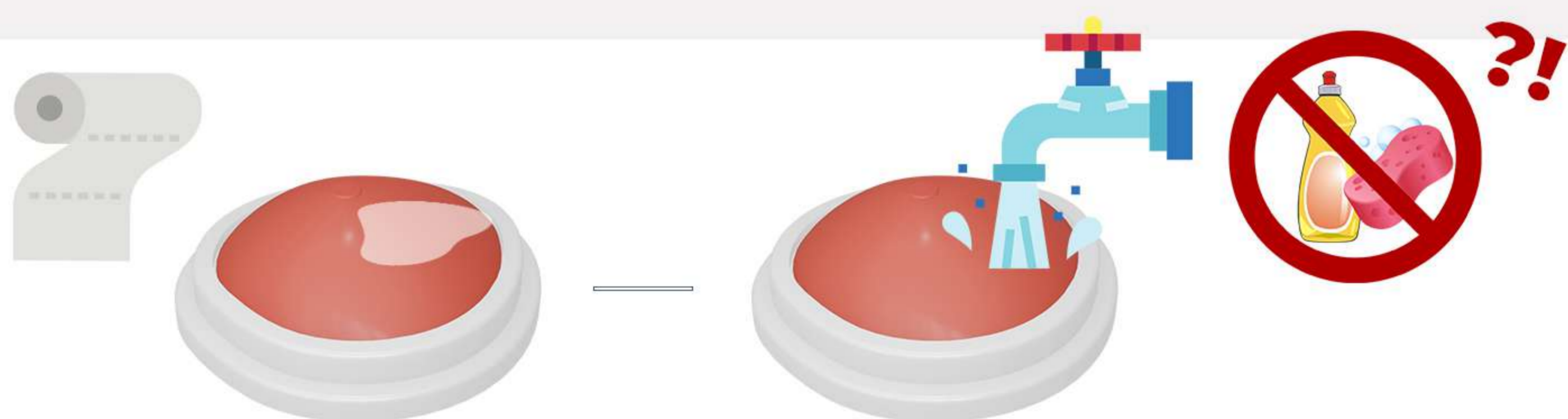


OBS: Expose your Gphantom to temperatures above 30°C (86°F), for long periods, can cause deformations and loss of properties;

- ② For training, remove the model from the packaging lid and fit the sites with venous structures;



- ③ After training, clean the product with a paper towel, removing excess gel for ultrasound and, then, wash it under running water without removing it from the base.



Do not store your Gphantom with excess gel, it may cause bad smell, thus reducing product durability.

Do not use detergents or sponges, as these damage the product!

HANDLING AND MAINTENANCE

- ④ After cleaning, store your Gphantom according to instructions contained in item I;
- ⑤ Gphantom Breast is a product for educational purposes, intended, ONLY, for medical training. In case of doubt, contact us through our relationship channels.

INCLUSIONS POSITIONING: RANDOM

Type of masses	Shape	N° of masses	Size	Color
Isoechoic + shadows	Regular	1	7,5 - 10mm (diameter)	Yellow/brown
Hypoechoic	Regular	2	7,5 - 10mm (diameter)	Green
Hypoechoic	Regular	1	4,5 - 6mm	Green
Hyperechoic	Regular	1	7,5 - 10mm (diameter)	White
Hyperechoic	Regular	1	4,5 - 6mm	White
Anechoic	Regular	2	7,5 - 10mm (diameter)	Red
Anechoic	Regular	1	4,5 - 6mm	Red
Isoechoic + shadows	Non-regular	1	9 - 21mm	Yellow/brown
Hypoechoic	Non-regular	1	9 - 21mm	Green

CONTACT US

For any questions or requests, contact us:



contato@gphantom.com.br



+55 1699848-2468